

*Psathyrella* from Fouad - Examination of an exsicccatum from ½ a cap  
D. Deschuyteneer



En bordure d'un canal et de prairies séparées par une piste cyclable, en présence de frênes, platanes et aulnes. Aucun autre feuillu à proximité.

Collected along a canalside and meadows with in between, a cycle path and a row of ash and plane trees.

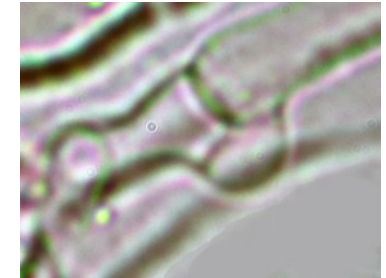
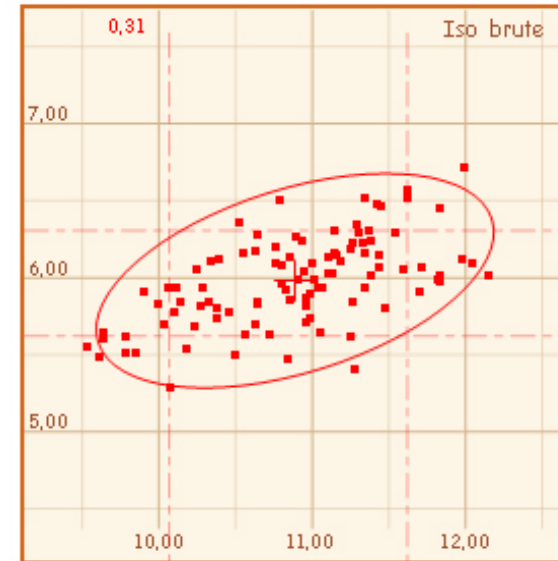
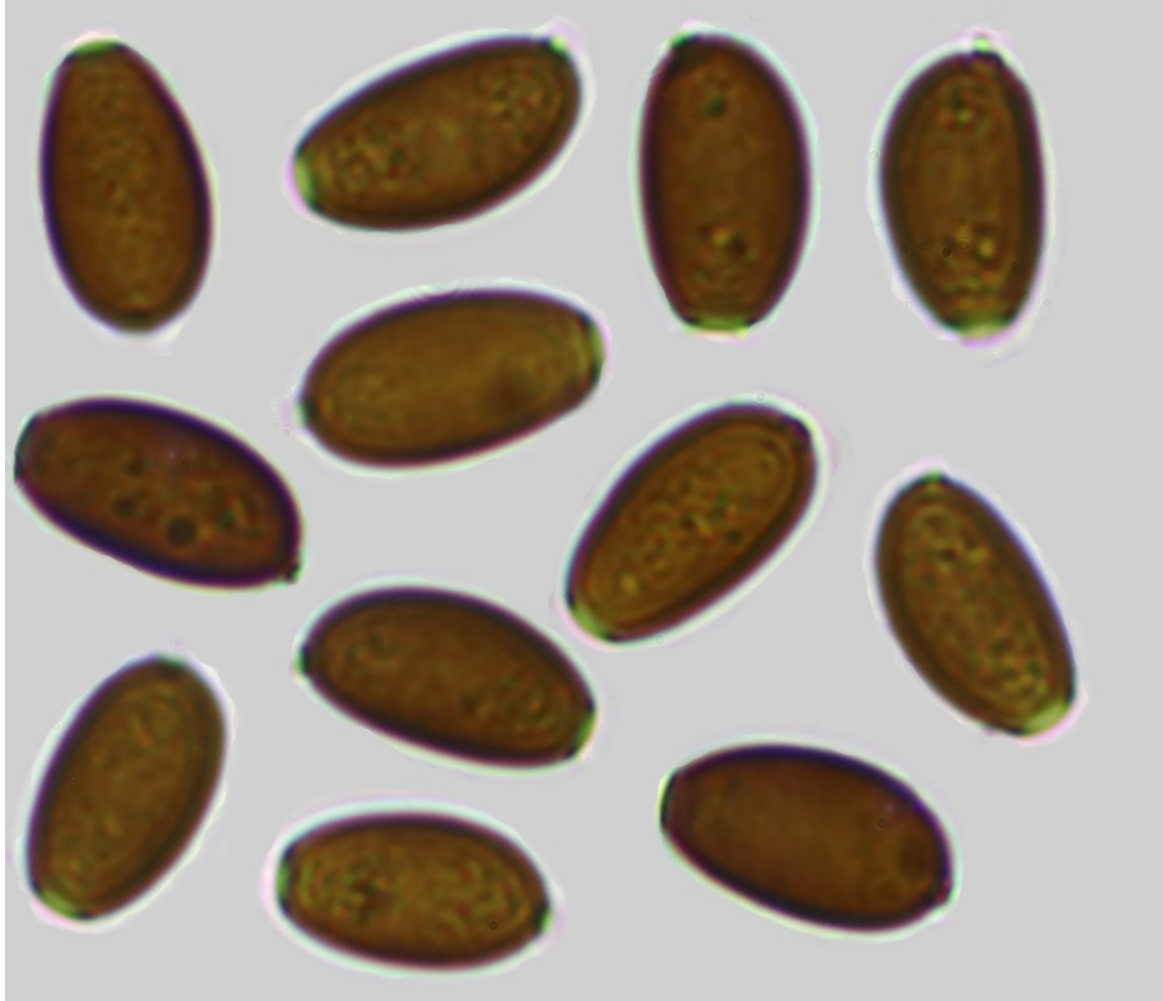
Along the immediate edge of the canal, alders trees. Not any other kind of tree.

Basides tétrasporiques, clavées. Boucles présentes.

Spores lisses, brun rougeâtre, ellipsoïdes de face, asymétriques et amygdaliformes de profil, pore germinatif distinct central.

Basidia 4-spored. Clamps: present.

Spores smooth, reddish brown, ellipsoid in face view, asymmetrical and amygdaliform in profile, germ pore central, distinct.



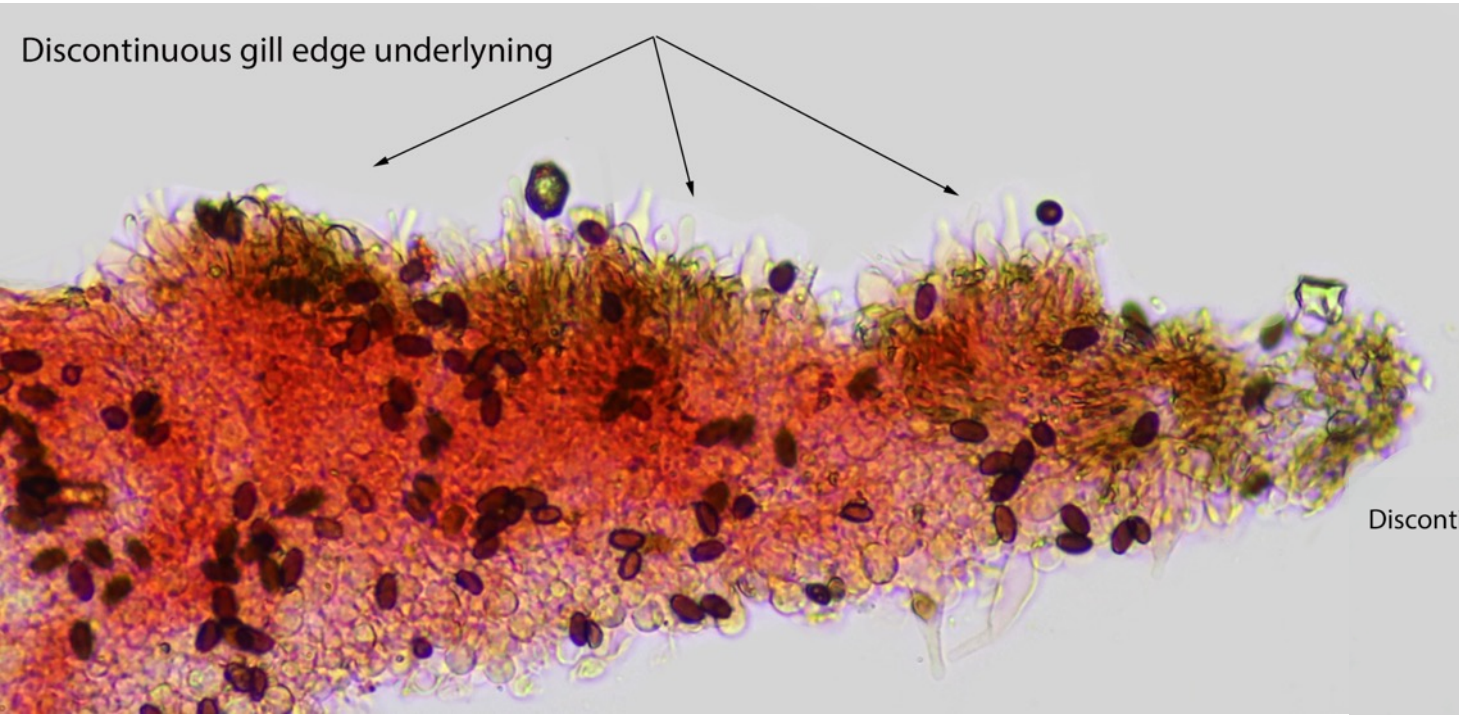
Spores measures: (N= 100)

(9,5) 10,1 - 11,6 (12,2) × (5,3) 5,6 - 6,3 (6,7)  $\mu\text{m}$

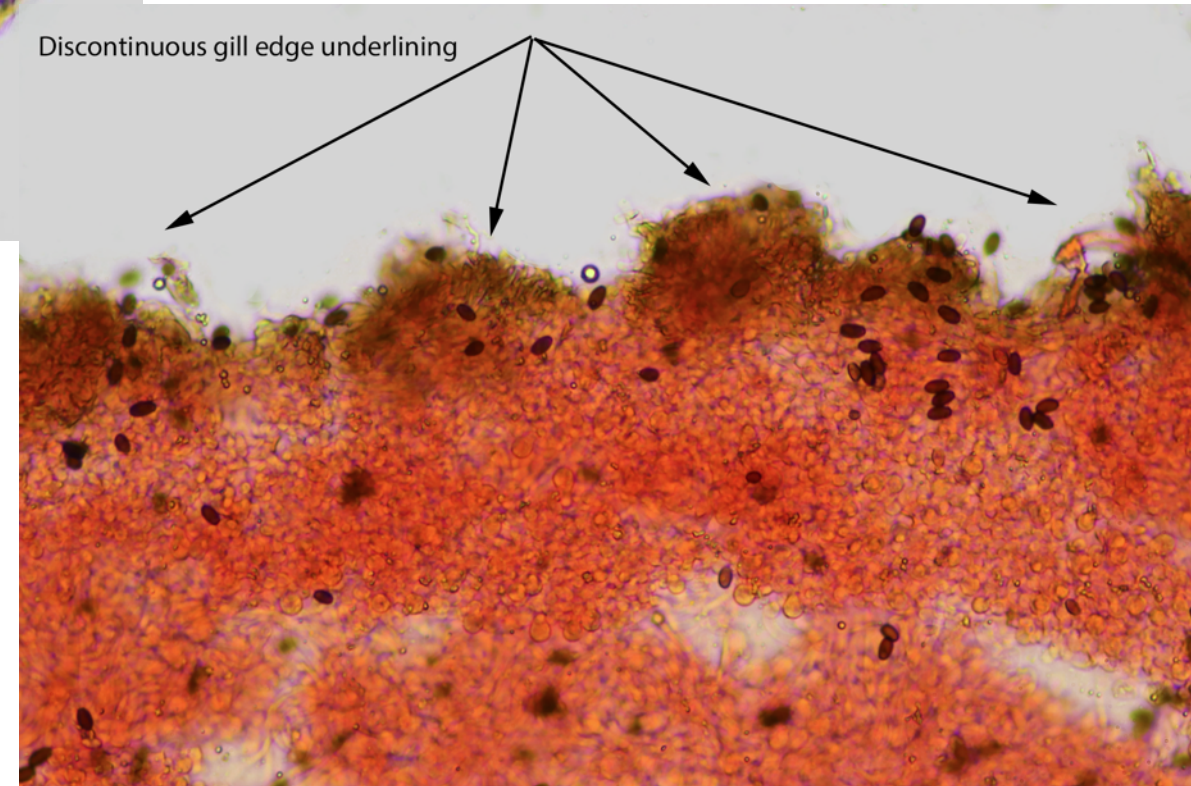
Me = 10,9 × 6  $\mu\text{m}$  ;

Q = (1,7) 1,71 - 2 (2,1) ; Qe = 1,8

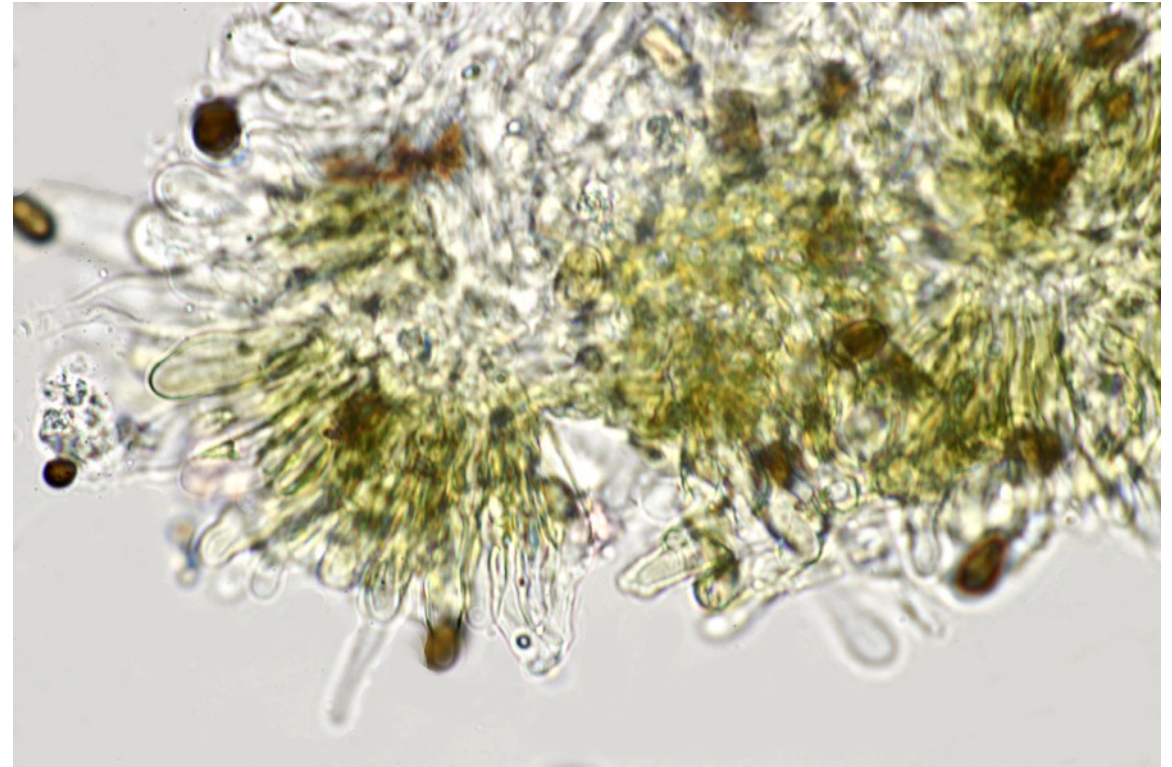
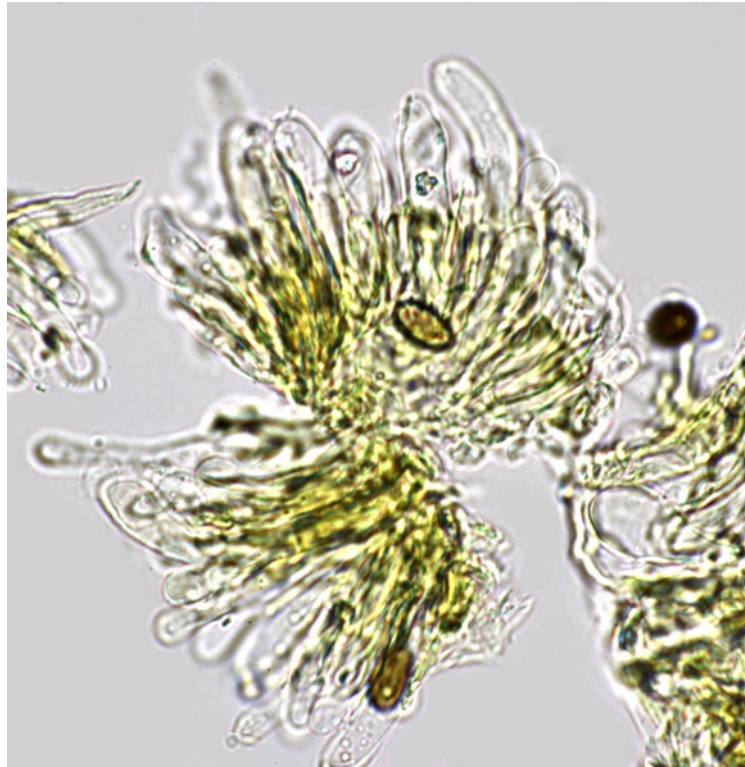
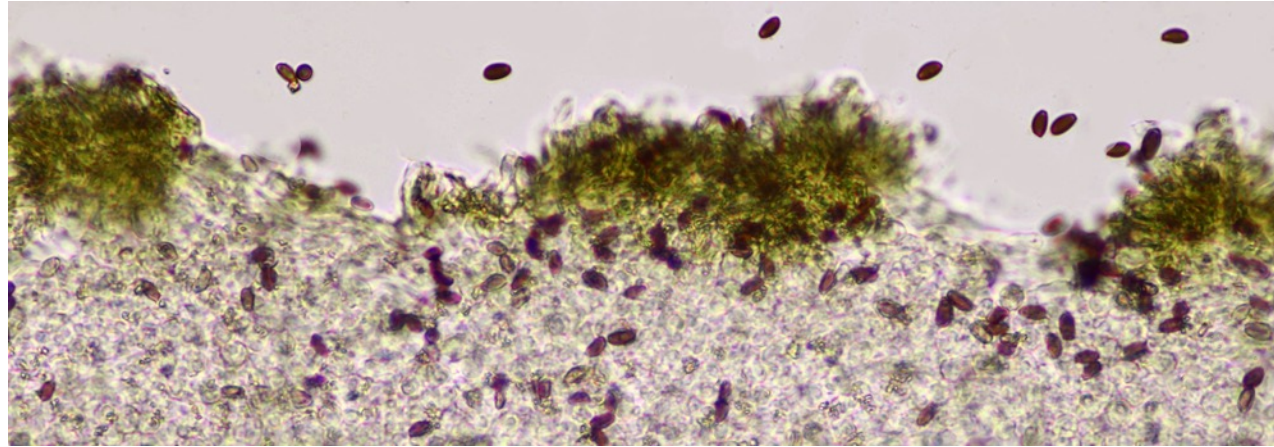
Arête des lames surlignée sur toute sa longueur, le plus souvent de manière discontinue, par des fibres et des cellules clavées colorées à paroi épaisse et colorées masquant les rares cheilocystides visibles.



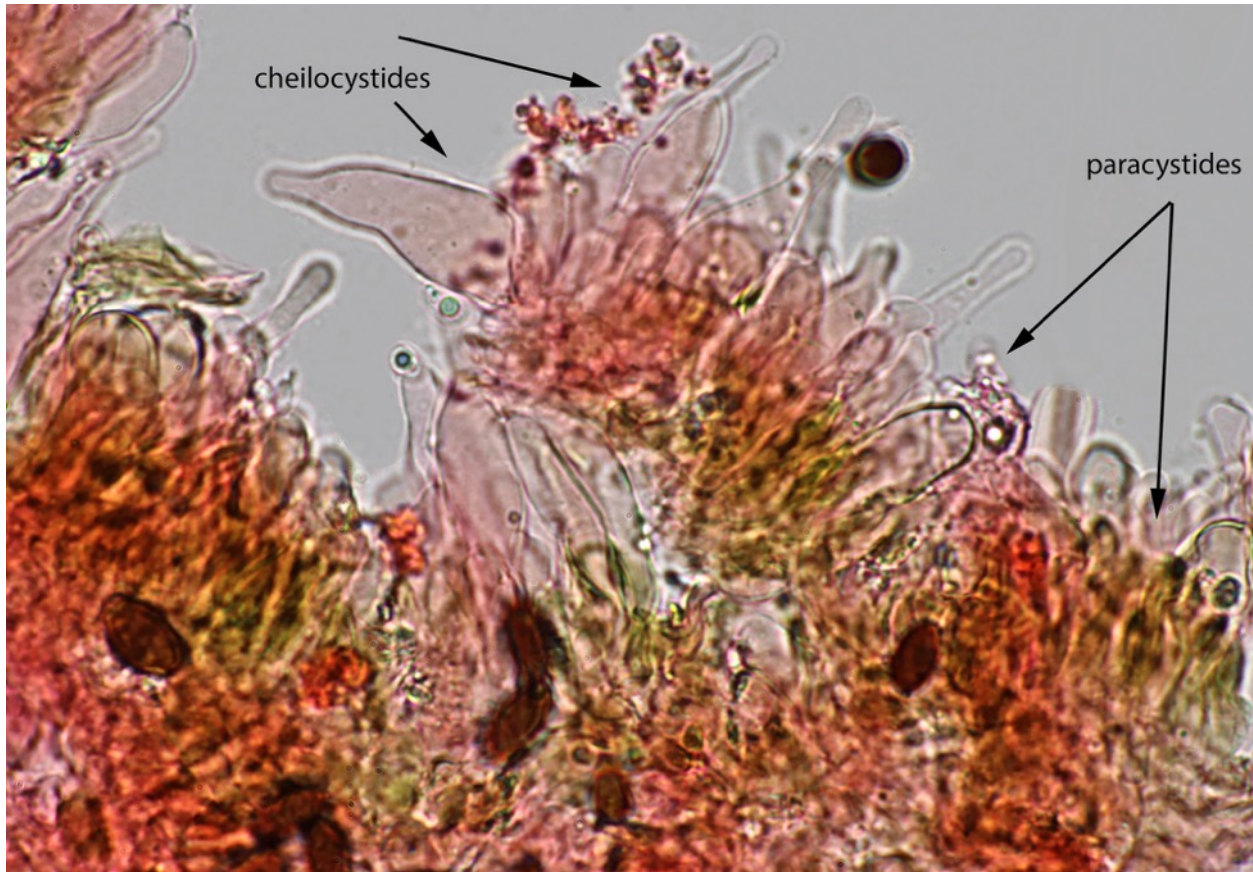
Gill edge underlined along its entire length, usually discontinuously, by fibres and thick-walled coloured, densely packed clavate cells, masking the rare visible cheilocystidia.



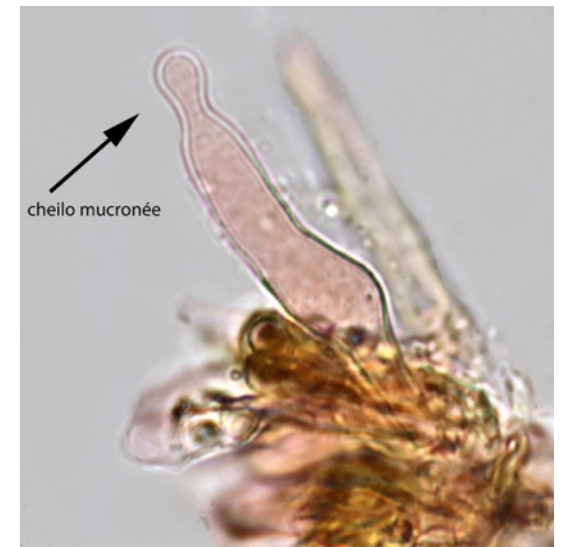
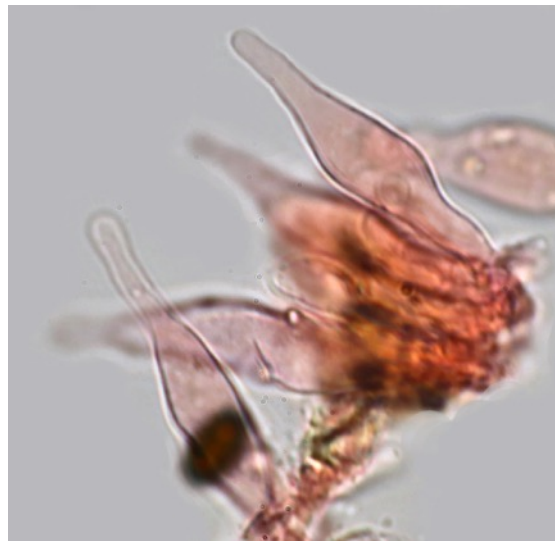
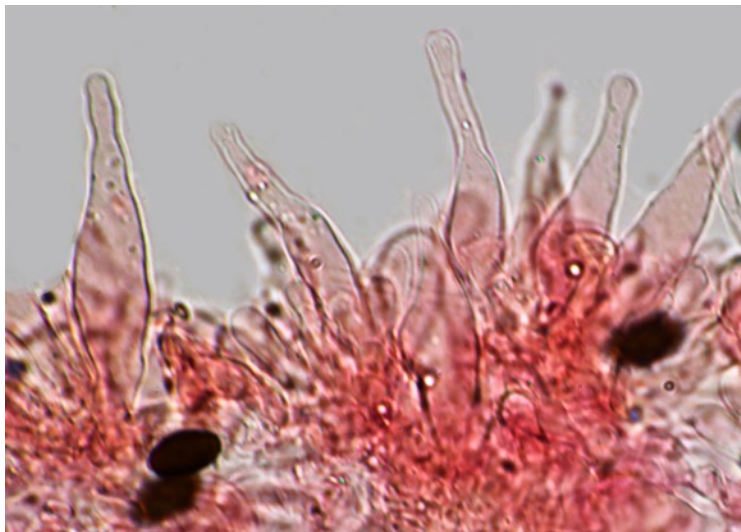
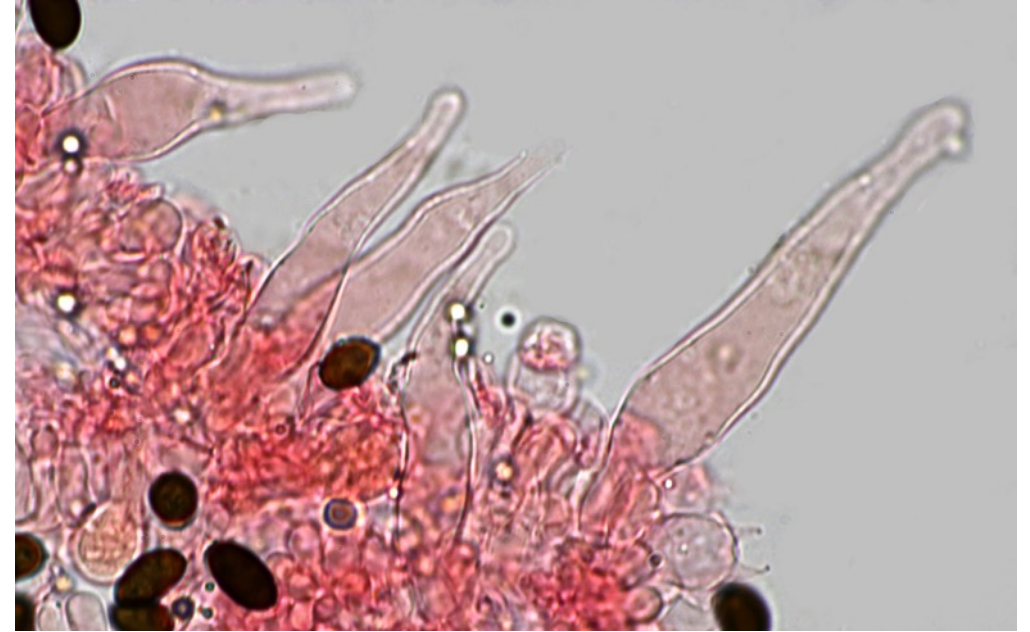
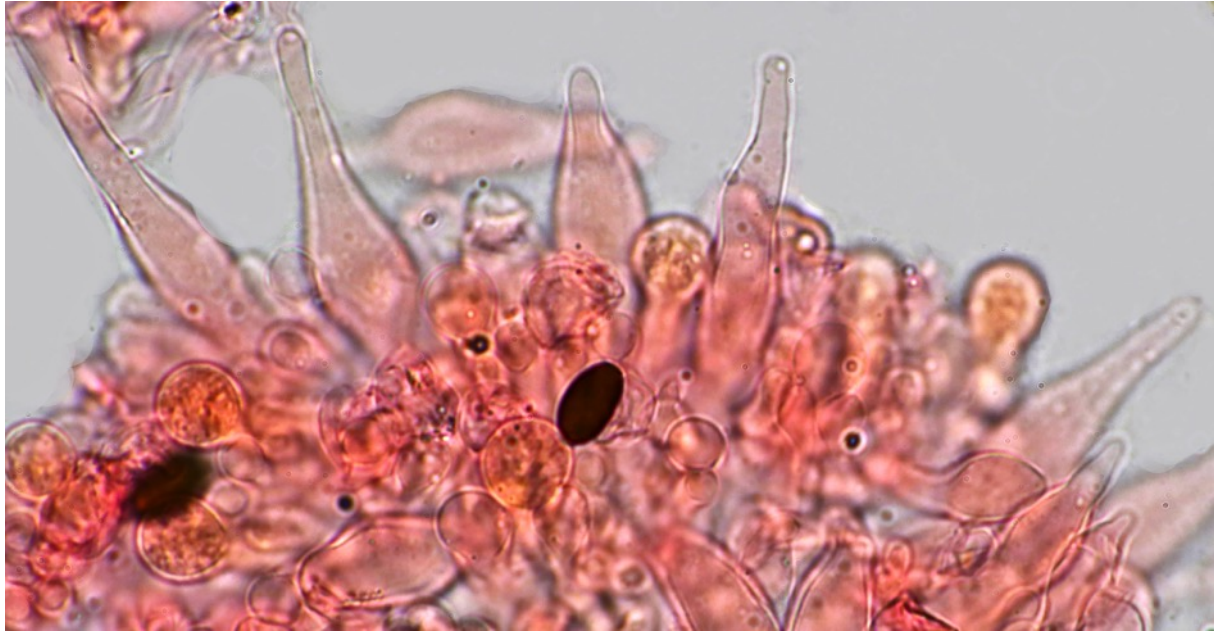
Gill edge discontinuously underlined, and paracytidia

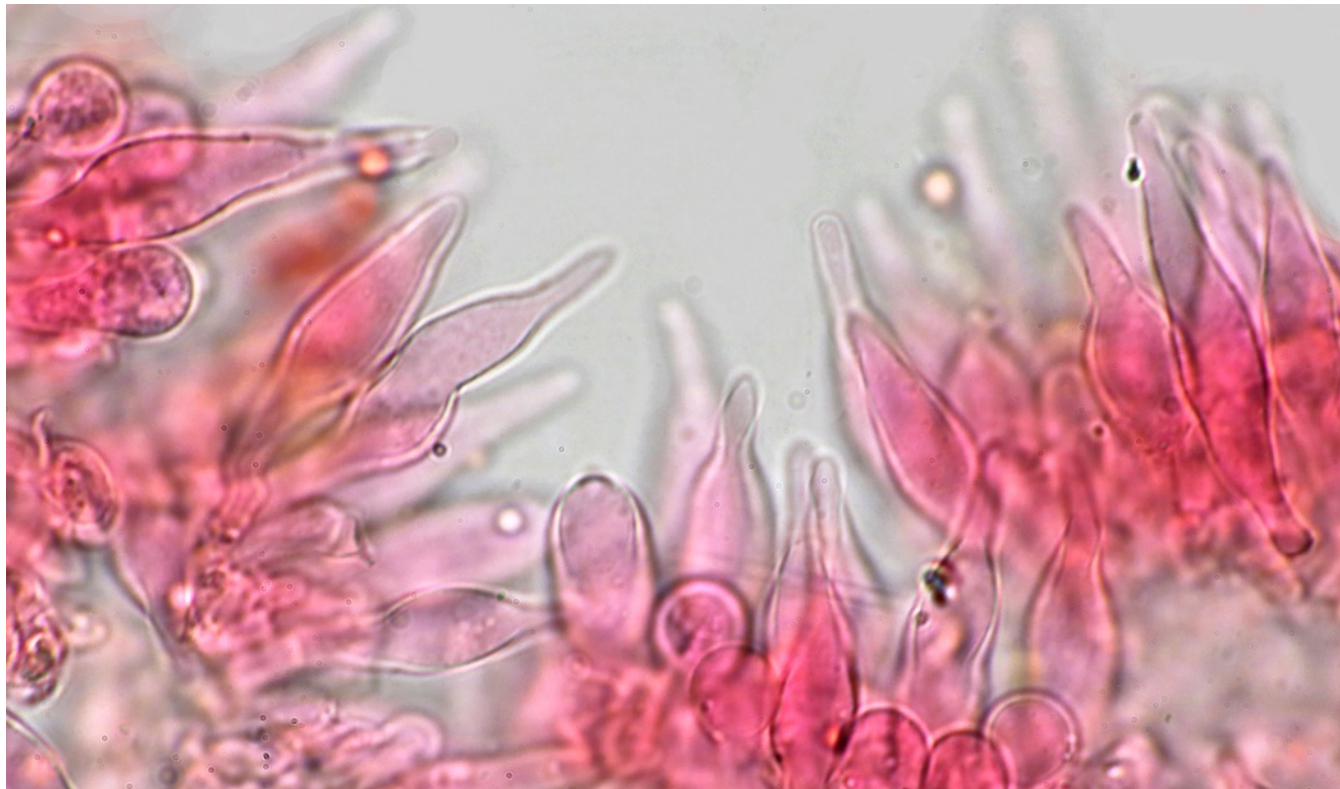
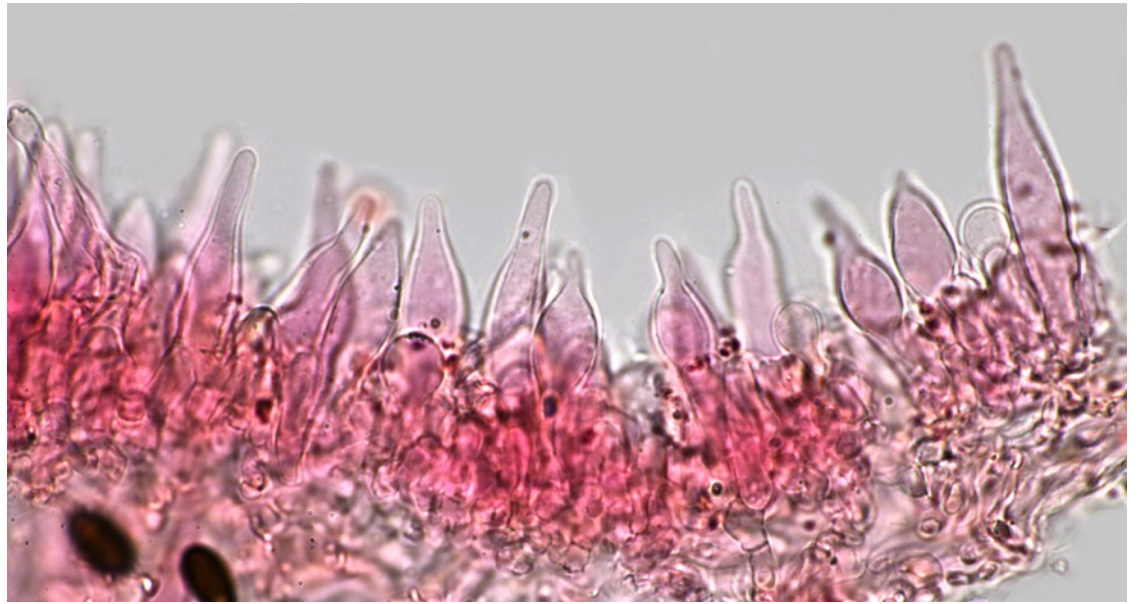
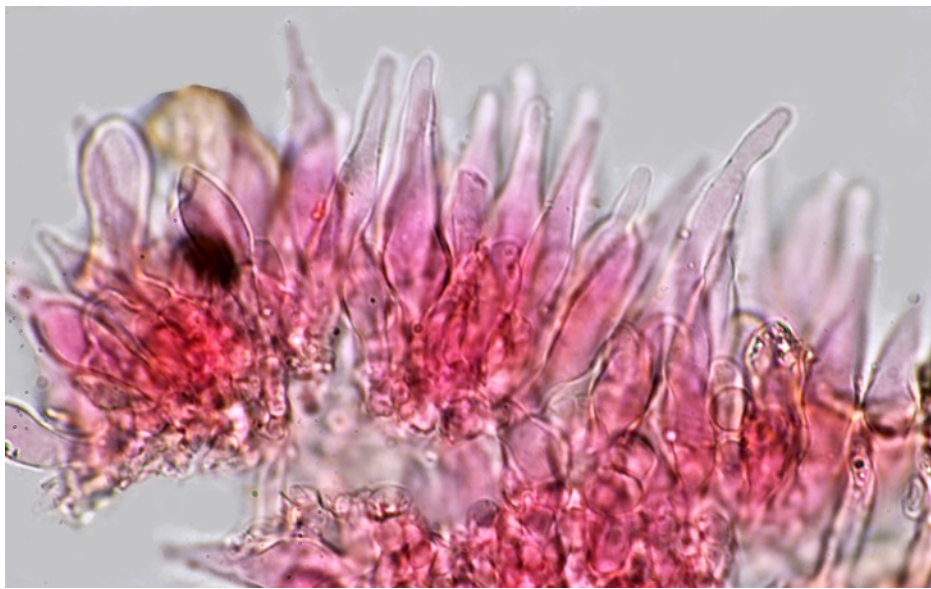


Rares cheilocystides masquées par les très nombreuses paracystides .  
Rare cheilocystidis masked by the very numerous paracystidia.



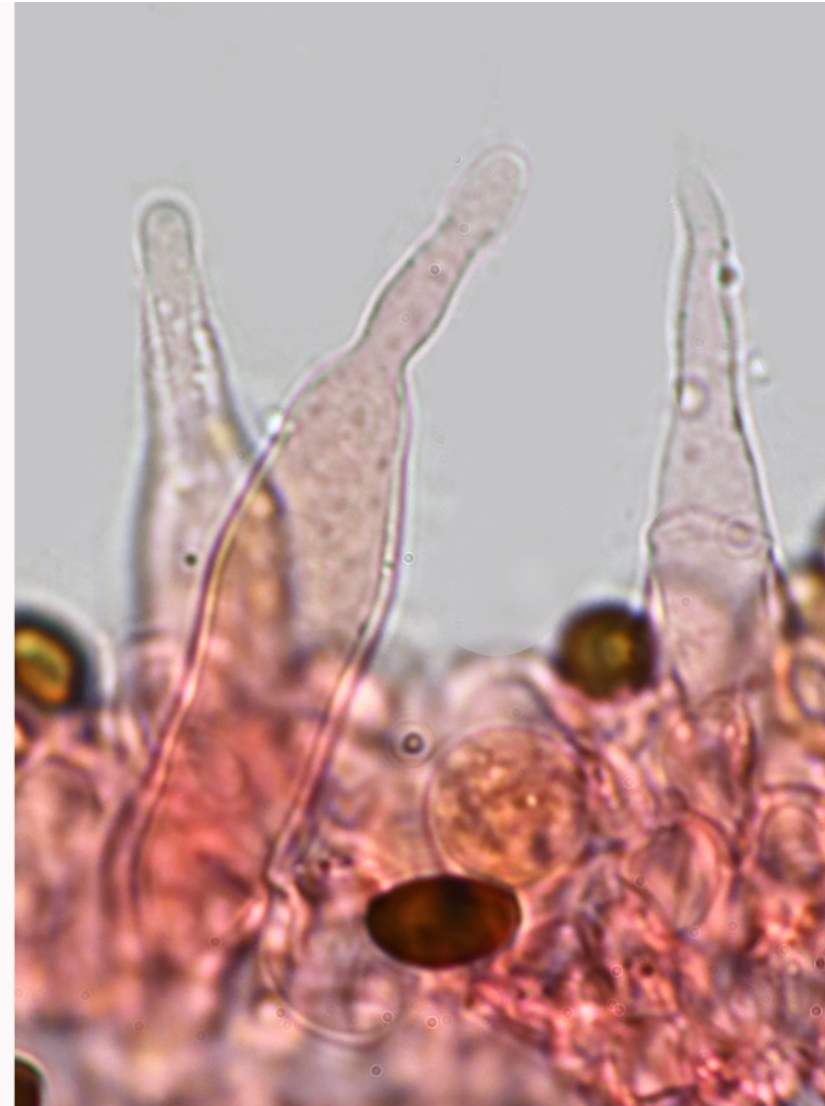
J'ai finalement pu isoler sur des lames secondaires les cheilocystides fusi-lagéniformes à sommet sub-aigu, parfois rostré, rarement fouchu.  
I was finally successful in isolating on secondary gills, fusilageniform cheilocystidia with sub-acute, sometimes rostrate, rarely forked apex.



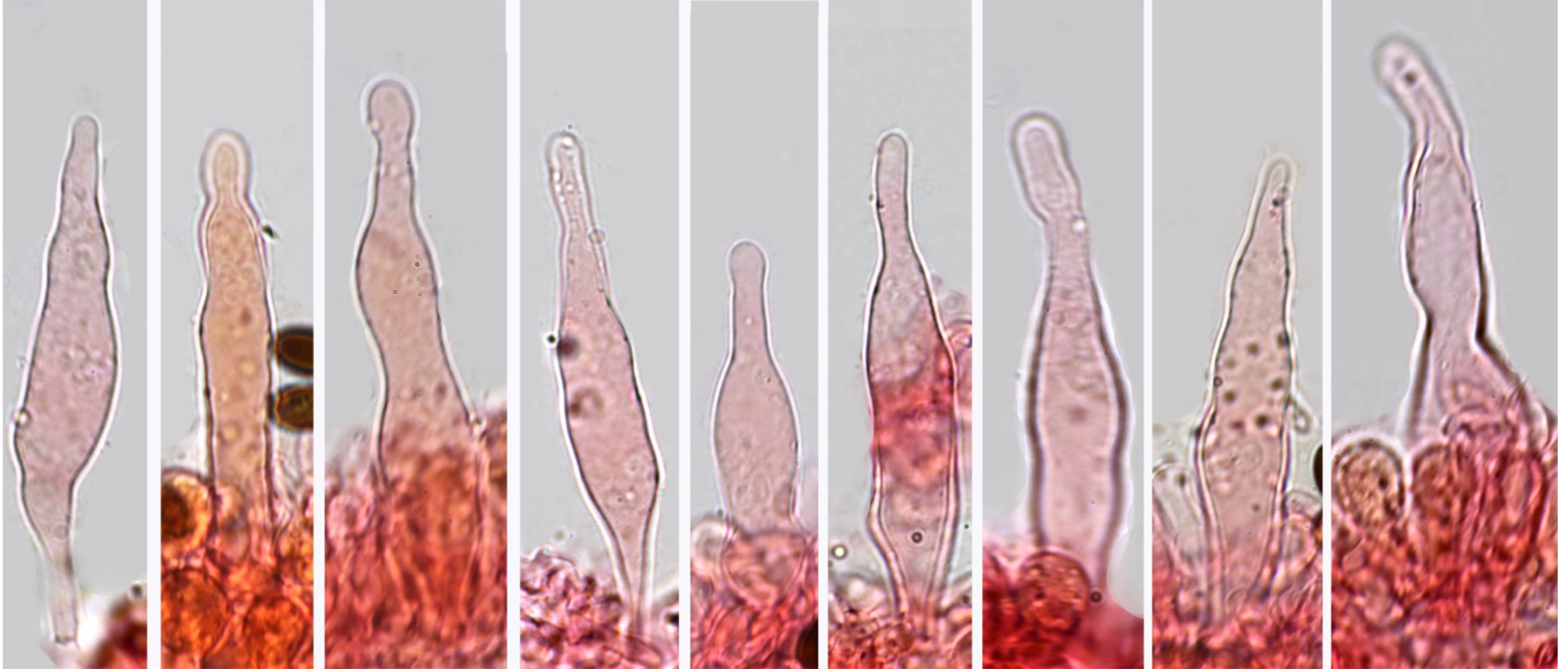


Pleurocystides très nombreuses, au profil irrégulier, cylindriques et fusilagénigormes, à sommet souvent prolongé par un rostre qui est court et large ou au contraire long et étroit et dont le sommet est alors souvent aigu.

Pleurocystidia very numerous, irregularly shaped, cylindrical and fusilagenigiform, with their top often prolonged by a rostrum which is short and broad or on the contrary long and narrow and whose apex is then often acute.



## Rostrate pleurocystidia



## Rostrate pleurocystidia

